



## Chapel Street, Hemel Hempstead, HP2 5DL

### **£375,000**

Located in a quiet Cul de Sac is this terraced home. The living accommodation comprises three bedrooms, 15'10 living room, kitchen/diner, gas central heating, family bathroom with separate wc, rear garden and allocated parking space.

Situated close to the Old Town High Street with all of its shops, restaurants, coffee shops, the historic church and Gadebridge Park. Also within easy reach of Hemel Hempstead town centre and the M1, M25 and A41 road links.

**Entrance Hall**

**Living Room 15'11 x 9'10 (4.85m x 3.00m)**



**Bedroom One 15'11 x 9'10 (4.85m x 3.00m)**



**Kitchen 8'8 x 6'10 (2.64m x 2.08m)**



**Bedroom Two 16'1 x 7'10 (4.90m x 2.39m)**



**Dining Room 8'9 x 8'8 (2.67m x 2.64m)**

**Landing**



**Bedroom Three 7'6 x 5'6 (2.29m x 1.68m)**



## Bathroom



## Separate WC

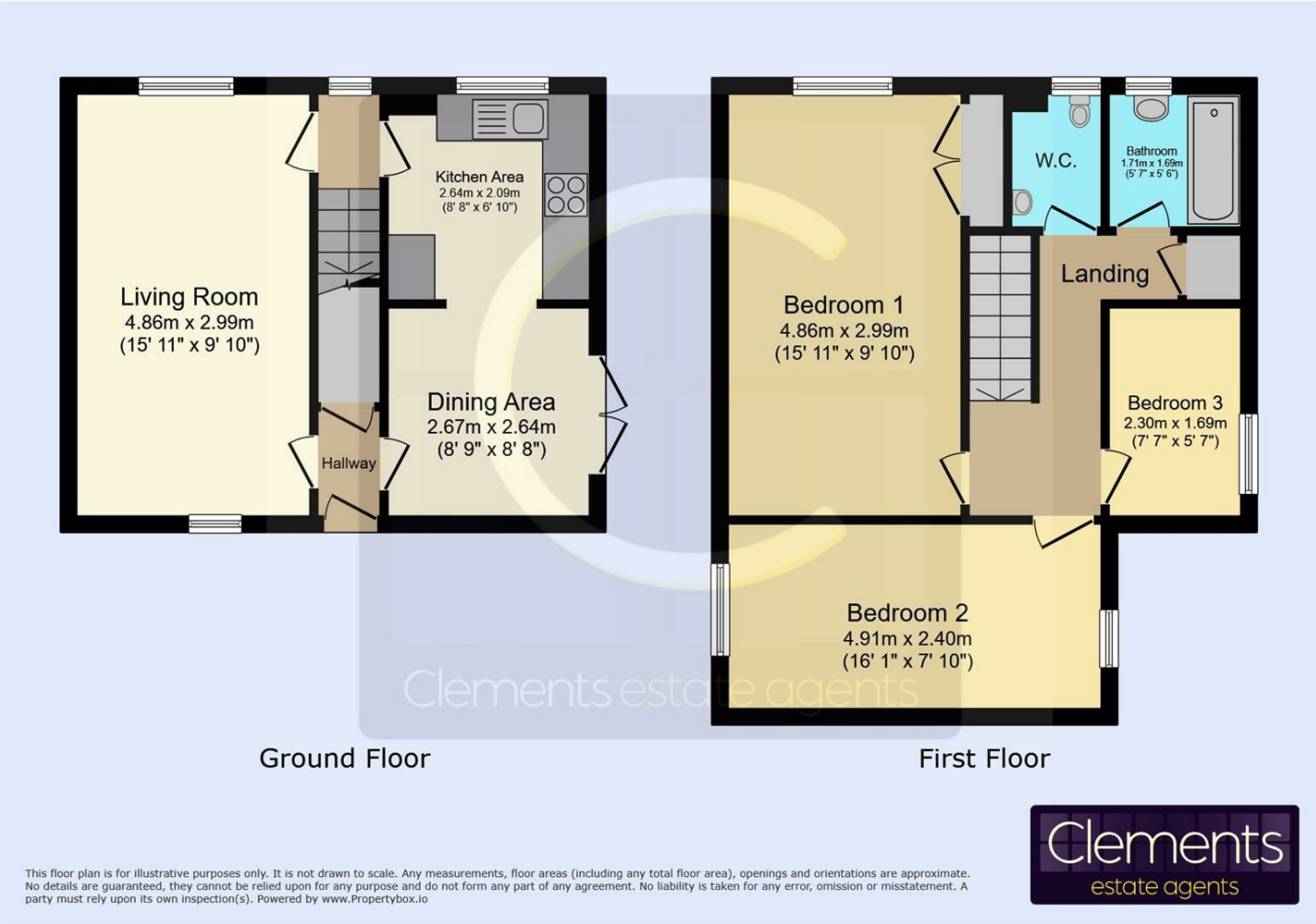


## Rear Garden



## Allocated Parking

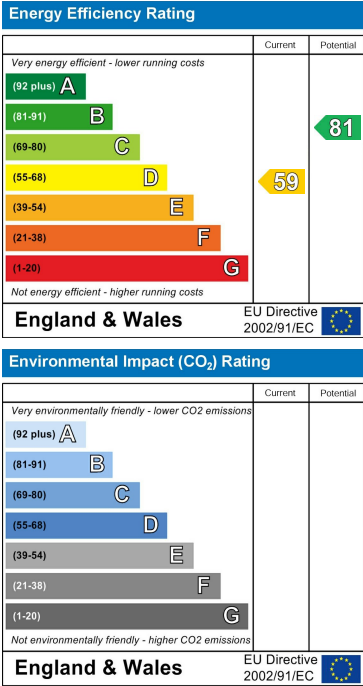
Floor Plan



Area Map



Energy Efficiency Graph



These particulars, whilst believed to be accurate are set out as a general outline only for guidance and do not constitute any part of an offer or contract. Intending purchasers should not rely on them as statements of representation of fact, but must satisfy themselves by inspection or otherwise as to their accuracy. No person in this firms employment has the authority to make or give any representation or warranty in respect of the property.